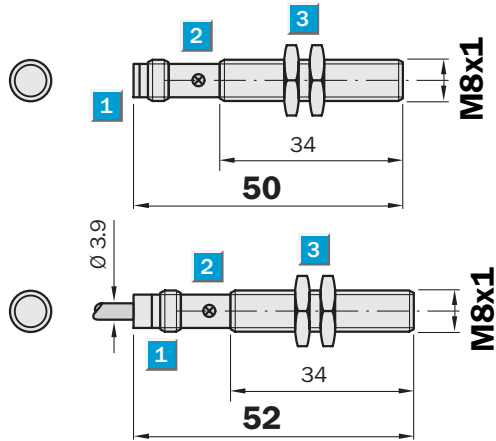


**Sensing range**  
1.5 mm

Inductive sensor

- Short-circuit protection (pulsed)
- Robust brass housing, nickel-plated with fine thread M8 x 1 mm
- Enclosure rating IP 67
- Installation flush

Dimensional drawing

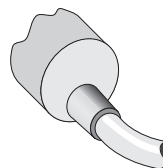
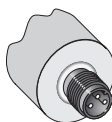


- 1 Connection
- 2 Display LED
- 3 Fastening nuts (2 x); width across 13, metal



Connection type

IME08-1B5NOZTOS	IME08-1B5NOZW2S
IME08-1B5NSZTOS	IME08-1B5NSZW2S
IME08-1B5POZTOS	IME08-1B5POZW2S
IME08-1B5PSZTOS	IME08-1B5PSZW2S

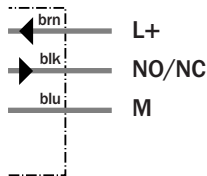
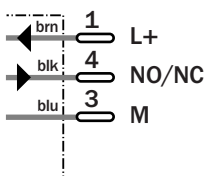


Accessories

Connector, M8, 3-pin

M8, 3-pin

3 x 0.14 mm<sup>2</sup>



Technical specifications		IME08-	1B5NO ZT0S	1B5NO ZW2S	1B5NS ZT0S	1B5NS ZW2S	1B5PO ZT0S	1B5PO ZW2S	1B5PS ZT0S	1B5PS ZW2S		
<b>Sensing range <math>S_n</math></b>	1.5 mm											
<b>Electrical configuration</b>	DC3-wire											
<b>Supply voltage <math>V_s</math></b>	DC 10 ... 30 V											
Ripple $U_{pp}$	$\leq 10 \%$											
Voltage drop $U_d$	$\leq 2 V^1)$											
Power consumption	$\leq 10 mA^2)$											
<b>Continuous current <math>I_a</math></b>	$\leq 200 mA$											
Time delay before availability $t_v$	$\leq 100 ms$											
Hysteresis H, of $s_r$	5 ... 15 %											
Repeatability R	Typ. 2 % ( $U_b$ and $T_a$ constant) <sup>3)</sup>											
Temperature drift, of $s_r$	$\pm 10 \%$											
EMC	According to EN 60947-5-2											
<b>Switching output</b>	NPN											
	PNP											
<b>Output function</b>	Normally closed											
	Normally open											
<b>Installation</b>	Flush											
<b>Connection type</b>	Connector, M8, 3-pin											
	Cable, PVC, 2 m											
<b>Enclosure rating</b>	IP 67 <sup>4)</sup>											
Max. switching frequency	4000 Hz											
Dimensions	M8 x 1 <sup>5)</sup>											
<b>Short-circuit protection</b>	✓ <sup>6)</sup>											
<b>Reverse polarity protection</b>	✓											
<b>Power-up pulse suppression</b>	✓											
Shock/vibration stress	30 g, 11 ms/10 ... 55 Hz, 1 mm											
Ambient temperature $T_a$	-25 °C ... +75 °C											
<b>Housing material</b>	Brass nickel-plated, plastic (PA6)											
Tightening torque	Typ. 5 Nm											
<b>Approvals</b>												
Protection class	<input type="checkbox"/>											
UL approval	cULus Listed											

<sup>1)</sup> At  $I_a$  max  
<sup>2)</sup> Without load

<sup>3)</sup> Of  $s_r$   
<sup>4)</sup> According to EN 60529

<sup>5)</sup> Thread diameter x pitch (mm)  
<sup>6)</sup> (Pulsed)

**Reduction factor  $R_M$**

The following are reference values, which may vary from type to type:

St37 (Fe)	1
Stainless steel (V2A)	Approx. 0.8
Aluminum (solid)	Approx. 0.45
Copper (Cu)	Approx. 0.4

**Ordering information**

Type	Part Number
IME08-1B5NOZT0S	1040850
IME08-1B5NOZW2S	1040852
IME08-1B5NSZT0S	1040846
IME08-1B5NSZW2S	1040848
IME08-1B5POZT0S	1040842
IME08-1B5POZW2S	1040844
IME08-1B5PSZT0S	1040838
IME08-1B5PSZW2S	1040840